

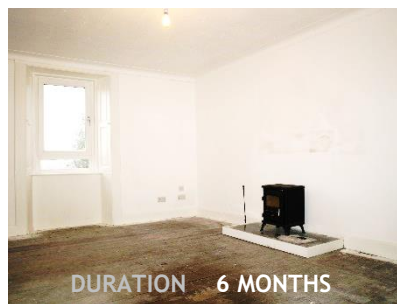
**PROJECT NAME** BARNAULD & BALLIANLAY  
**CLIENT NAME** MOUNT STUART TRUST



## scope of works

- ❖ slate roofing
- ❖ metal roofing
- ❖ rot treatments works
- ❖ structural repairs
- ❖ joinery
- ❖ plumbing and drainage
- ❖ heating
- ❖ power and lighting
- ❖ land scaping
- ❖ oil tank
- ❖ log burners
- ❖ kitchens and bathrooms
- ❖ decorations

These two properties were in semi-derelict condition and required significant stabilisation and rot treatment works to bring back to habitable condition. Both properties were fully re-roofed and fully refurbished from top to bottom.





setting the  
example in  
fit-out  
contracting

