

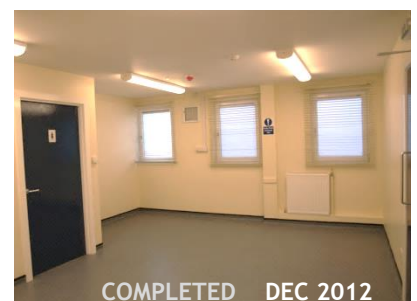
PROJECT NAME BROXBURN
CLIENT NAME LOTHIAN & BORDERS POLICE

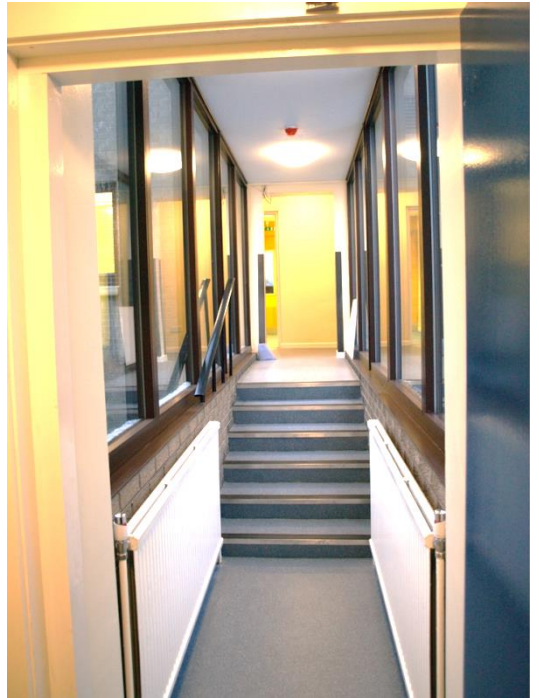


scope of works

- ❖ project management
- ❖ mechanical & electrical
- ❖ joinery
- ❖ plumbing
- ❖ builder works
- ❖ tiling
- ❖ floor coverings
- ❖ decorations
- ❖ steel work fabrication
- ❖ ground works
- ❖ roofing works
- ❖ ventilation
- ❖ electrical engineering
- ❖ alarms and intercoms

Complete refurbishment of the Police Divisional Headquarters at Broxburn. Works comprised of structural alterations to increase open plan space together with conversion of areas to create new toilet and showering facilities over two floors.





setting the
example in
fit-out
contracting

